






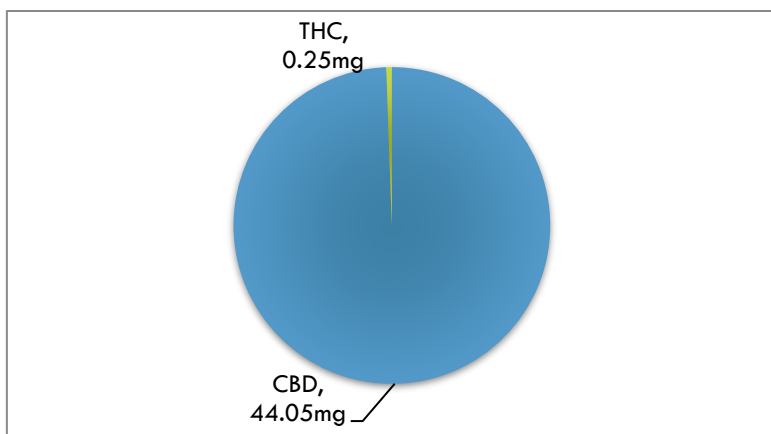


Material Tested: Massage Oil
 Testing Method: UPLC-DAD
 Date Tested: 11/06/2018
 Batch Number: E1105819
 Testing Analyst: Benjamin Dennis Reviewed by Jeremy Riggle, PhD
 Total Product Mass: 112 grams
 Manufactured date:

ACIDIC COMPOUND mg/unit		NEUTRAL COMPOUND mg/unit	
CBDA	<0.1 mg	CBD	44.05mg 
THCA	<0.1 mg	THC	0.25mg 
CBCA	<0.1 mg	CBC	<0.1 mg 
CBGA	<0.1 mg	CBG	<0.1 mg 
CBNA	<0.1 mg	CBN	<0.1 mg 
THCVA	<0.1 mg	THCV	<0.1 mg 
CBDVA	<0.1 mg	CBDV	<0.1 mg 

Cannabinoid Content (wt/wt)




Jeremy Riggle, PhD

Mary's Nutritionals, LLC is a wholly owned subsidiary of Mary's Medicinals, LLC. Information provided in this report is for CBD rich hemp cultivated by Elite Botanicals, Loveland CO.

